



JÄRFÄLLA

# REQUEST FOR SCHOOL

Submit requests between 24 January and 10 February regarding preschool class or grade 7! [jarfalla.se/skolval](https://jarfalla.se/skolval)



# It's now time to request a school place for the autumn term

When you have submitted a request regarding school placement, the municipality will try to meet your wishes as far as possible. Placement takes place based on your wishes and the number of available places at the schools.

## This is how you apply

You submit your request via our e-service that can be found at [Jarfalla.se/skolval](http://Jarfalla.se/skolval). To be able to use this service, you will need a bank.id.

If you do not have a Bank-ID you can order it by contacting your bank or at [support.bankid.com](http://support.bankid.com).

## Apply for a place at a leisure center

For those who want to register a place at a leisure center for their pre-school children, if you do so in May/June, in autumn 2025 you will receive a placement decision regarding which school your child will attend. Information will be provided in the placement decision.

## Applications to an independent school?

Would you like your child to attend an independent school or a school outside the municipality? If so, you must contact the school directly.

If you know that your child will not attend a municipal school in Järfälla, you should renounce the choice of a municipal school so that the place can go to another pupil. You do so online.

If your child has a place at an independent school in the municipality and you do not submit a request in the municipal school selection process, your child will not be offered a place at a municipal school.

## What happens after the application period?

### Decision regarding school placement

In April you will receive from us a decision regarding school placement. Direct placement applies in the choice of school. This means that when you receive the decision regarding school

This means that when you receive the decision regarding school placement, the matter is final, and you do not need to confirm that you wish to have the place. If you are dissatisfied with your school placement, you can apply to change school during any of our change of school periods. Note that independent schools may provide information about a school place at a different time.

### This is how school placements are distributed

To the greatest possible extent, we try to place your child according to your wishes. If your child does not get his/hers first choice, the municipality will then strive to satisfy the second choice and so forth.

#### Admission order for preschool class

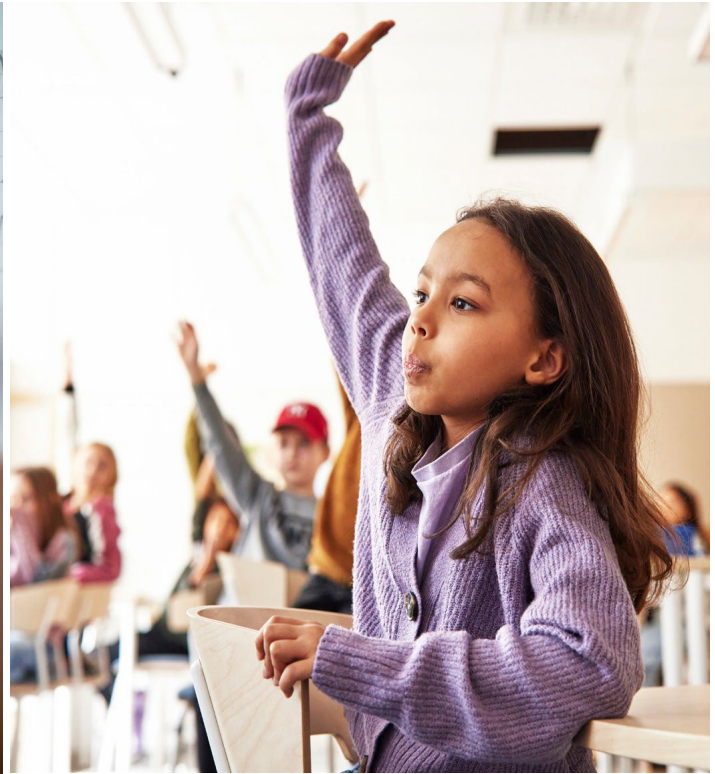
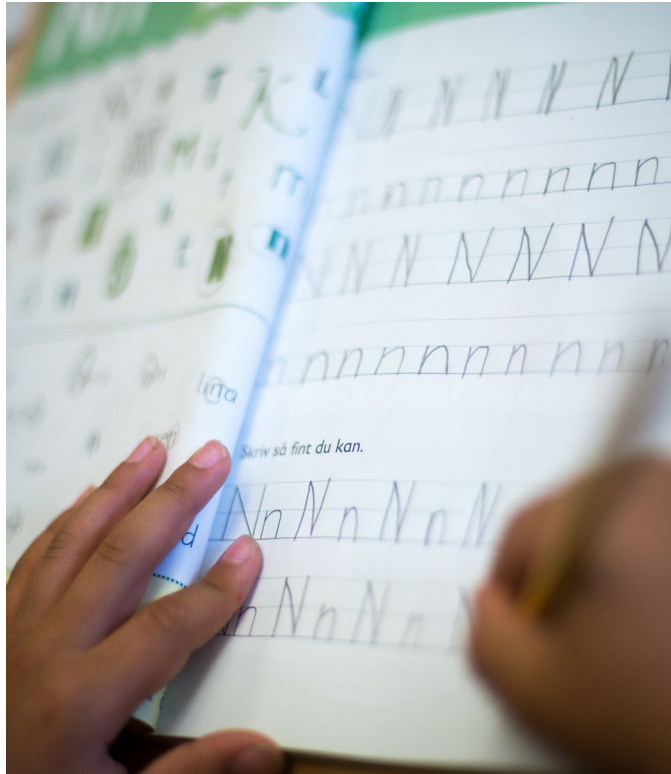
1. Pupil with protected identity
2. Pupil with sibling preference (Applies if siblings are in grades 1-3 at the desired school, only siblings registered at the same address give sibling priority)
3. Pupil that
  - desired placement at the school *as well as*
  - Pupils who have not submitted a request for a place at the school, but who are assumed to want to go to school based on the school's proximity to home
4. Pupil from another municipality

#### Admission order for grade 7

1. Pupil with protected identity
2. Pupil that
  - desired placement at the school as well as
  - Pupils who have not submitted a request for a place at the school, but who are assumed to want to go to school based on the school's proximity to home
3. Pupil from another municipality

### If there are not enough places

If many apply to the same school and not all get admitted, we then use the relative proximity principle to select. It means that pupils' distance from home to the desired school and other close-by schools are compared with other pupils' distance.



We then proceed with the population registration address as well as the nearest walking path to school. The aim is that all pupils shall have reasonable distance to their school. You can read more about the relative proximity principle at [jarfalla.se/skolval](http://jarfalla.se/skolval)

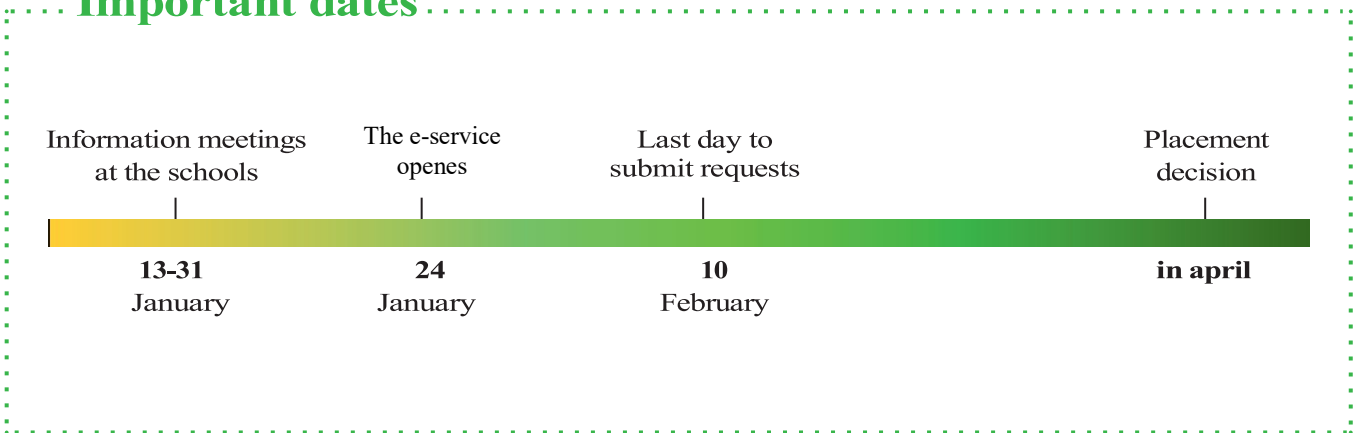
**On the move to Järfälla?**

Have you newly moved in? In that case we need to create an account for you in the e-service so that you can leave a school request for your child. Contact our service center [konatkt@jarfalla.se](mailto:konatkt@jarfalla.se) or call 08- 580 285 00.

**If you do not submit a school request**

The municipality is responsible for providing a place to all compulsory schooling children that are registered in the municipality. If you do not submit a request for school then the nearest school will automatically be your first-hand choice, second nearest school as your second choice and so forth. You can read more at [jarfalla.se/skolval](http://jarfalla.se/skolval).

**Important dates**



# Would you like to know more about our schools?

You are warmly welcome to attend our information meetings on 13-31 January. See information on [jarfalla.se/skolval](http://jarfalla.se/skolval).

## Municipality schools

There are 22 municipal schools in Järfälla municipality. We are constantly working to improve results with a focus on security and peaceful studying in order to create the best conditions for development and learning.

See more about our schools on [jarfalla.se/grundskolor](http://jarfalla.se/grundskolor)

## Independent schools

In Järfälla there are three independent schools located in Jakobsberg. They have varying profiles, for example Montessori method education and instruction in English.

Montessoriskolan Växthuset, grade F-6:  
[ahavaxthuset.se](http://ahavaxthuset.se), [info@ahavaxthuset.se](mailto:info@ahavaxthuset.se) or  
call 08-580 275 00.

Vittra Jakobsberg, grade F-9:  
[vittra.se/jakobsberg](http://vittra.se/jakobsberg), [jakobsberg@vittra.se](mailto:jakobsberg@vittra.se) or  
call 08-584 105 90.

Internationella Engelska skolan, grade 5-9:  
[jarfalla.engelska.se](http://jarfalla.engelska.se), [info.jarfalla@engelska.se](mailto:info.jarfalla@engelska.se)  
or call 08-584 306 30.

---

## Information in different languages

Tietoa omalla kielelläsi: [jarfalla.se/skolval](http://jarfalla.se/skolval) tai soita palvelukeskukseen 08-580 285 00.

Information in your language: [jarfalla.se/skolval](http://jarfalla.se/skolval) or call Servicecenter, phone number 08-580 285 00.

Haddaad doonayso warbixin dheeraad ah halkaan kala xirri: [jarfalla.se/skolval](http://jarfalla.se/skolval) ama wac Servicecenter 08-580 285 00.

ሓበሬታ ብቋንቋኹም ኣብ : [jarfalla.se/skolval](http://jarfalla.se/skolval) ወይ ብቋጽሪ ስልኪ ናብ ኣገልግሎት ማእከል

08-580 285 00 ደውሉ።

المعلومات باللغة العربية تجدها على الموقع الإلكتروني التالي [jarfalla.se/skolval](http://jarfalla.se/skolval) أو يمكنك الاتصال على خدمة الزبائن 08-580 285 00

اطلاعات به زبان شما : [jarfalla.se/skolval](http://jarfalla.se/skolval) یا مرکز خدمات تلفنی 08-580 285 00